



**children's
institute**

ANNUAL REPORT 2021



Healthy Children | **Thriving** Families
Empowered Communities



Dear Friends,

The success of our children is deeply connected to the health of their families and neighborhoods.

Even though vaccinations are free and now widely available, we know that people are still struggling to rebound from the economic and emotional loss of the past year. They will continue to need support, and advocates like you are especially important now.

Children's Institute provides programs that wrap around our families, addressing multiple challenges for communities where underinvestment and racist policies continue to limit opportunities and deepen health inequities.

Whether families are connected to CII through counseling, parenting supports or early education, we link them to additional resources to help them thrive. For example, CII's early education programs connect parents to primary care providers and ensure that their children are up-to-date on their immunizations.

Together, we can continue to offer healing and hope to 25,000 children and families each year. Thank you for your continued support.

With our warmest wishes,

Martine Singer
President & CEO

Paul Kanin
Chairman, Board of Trustees





What We Do

Every year, Children’s Institute impacts the lives of some 25,000 children and their families across Los Angeles – from Echo Park to Watts to Long Beach. Our two-generation model, working with children and their caregivers together, includes high-quality early education and youth programs, counseling services, parenting supports, workforce development, and access to resources.

Achieving wellness for children and families requires a comprehensive approach. Working alongside community members and partners, we research and develop innovative ways to increase investment, promote equity and offer services that empower children and families to succeed.

MISSION

To transform the lives of children exposed to adversity and poverty in Los Angeles.

2021 AT A GLANCE



24,716

Children and family members served



10,574

Professional training attendees



983

Staff members



31

Locations



\$94M

Budget

Our Impact

MAKING A DIFFERENCE
ACROSS LOS ANGELES

Children and Families Served (FY20–21)

Early Childhood Education

Including center- and home-based options 1,514

Behavioral Health & Wellness

Including evidence-based practices, counseling, and intensive and non-intensive services 3,122

Community Innovations

Including crisis response, Project Fatherhood, Community Schools and Innovations 1,845

Strengthening Families

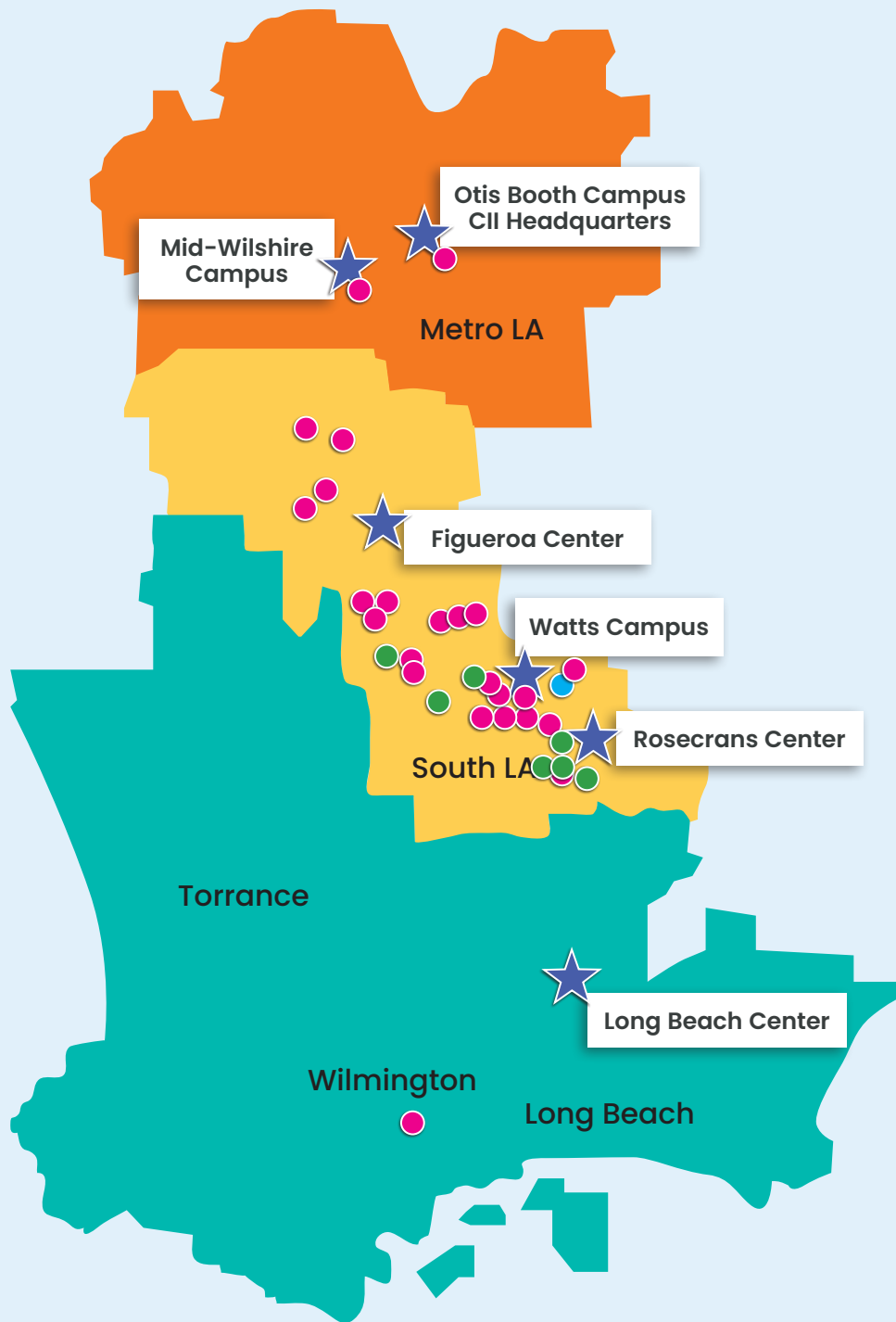
Including in-home services, programs for transition-aged youth, and parenting groups 4,112

Family Members Served 14,123

TOTAL..... 24,716



CHILDREN'S INSTITUTE LOCATIONS



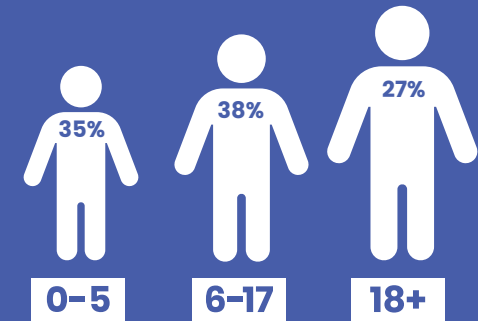
- ★ CII campus or service location
- CII early childhood center
- CII community school partnership
- CII early childhood center coming in 2022

Service Planning Area (SPA) Key:

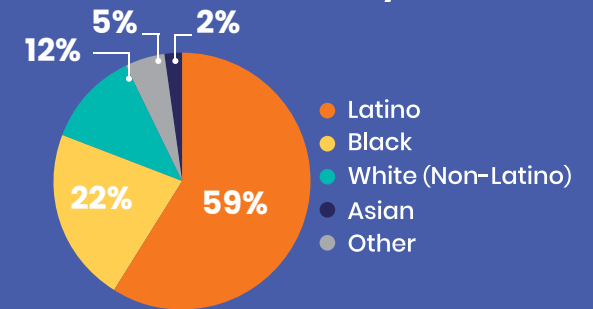
- Orange—SPA 4
- Yellow—SPA 6
- Teal—SPA 8

DEMOGRAPHICS

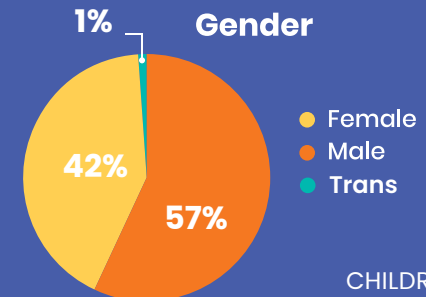
Age



Race/Ethnicity



Gender



Partners in Health Equity

For many families already struggling with the stressors of poverty, the COVID-19 crisis has been devastating. The pandemic impacted Latino and Black households disproportionately, putting families at risk of destitution. As an essential service provider, CII responded to the crisis by providing basic needs like diapers and groceries, and distributing lunches at our preschools during lockdown.

The pandemic also underscored the essential link between physical health and mental wellbeing. This is why CII sought out distinguished members of the medical community to join our Board of Trustees: Nicole Anderson Leonard, JD, joined our Board in May 2021. **“I’m passionate about ensuring our communities are healthy so that our children can thrive,”** said Leonard. “As a board member at CII, I am eager to work with the best minds in child advocacy and trauma-informed practices as we build networks of care that respond to local needs, and increase capacity for healing and resilience.” Recently, her colleague from Cedars-Sinai, neurosurgeon Lindsey Ross, MD, also joined the board.



Cedars Sinai has donated \$1 million to CII over the last four years, funding mental health services, groceries and funds for basic resources for parents of children enrolled in CII programs; training for CII’s Early Childhood Education staff; the implementation of a web-based care coordination system; and CII’s Office of Equity. This year, Cedars physicians hosted three virtual and bilingual town hall Q&A sessions about the COVID-19 vaccine – one for CII staff and two for CII families and community members. This past summer, Cedars offered eight pop-up vaccine clinics on CII’s campuses, open to all community members age 12 and older.



3

virtual, bilingual COVID-19 vaccine town halls



8

pop-up COVID-19 vaccine clinics



A Lifeline for Families

CII has been a lifeline for families, responding to crisis after crisis and providing more than \$1.7 million in assistance and supplies, including gift cards for food, rent assistance, formula, diapers and more.

In 2019, Children's Institute received less than 150 requests for basic-needs support. In 2020, CII received more than 3,500 requests for these same resources. Nothing demonstrated the loss and urgent need our families were experiencing more than this 2,300% increase.

CII reached out to partners for help, resulting in over **200,000** goods and essential supplies donated to families.



38,000+

Pieces of personal protective equipment



4,500+

Food items for families



11,000+

Items of clothing for adults



80,000+

Diapers



900+

Cans of formula



3,000+

Items of clothing for preschoolers

Volunteers to the Rescue

We are extremely grateful to those who donate their time and creativity to benefit children and families. COVID-19 limited volunteer opportunities to virtual events, so many volunteers shifted their focus to collecting in-kind donations for our families.

Thanks to these incredible individuals, The Carl & Roberta Deutsch Foundation selected CII for its 2020 HALO Award, which strengthens volunteer programs. Along with a \$20,000 grant to support our program, our team participated in yearlong capacity-building activities. And we were able to recognize one of CII's extraordinary parent volunteers, Maria Orellana, with a gift of \$5,000.



WINTER FESTIVAL

For the first time, the Annual Winter Festival was held virtually with a drive-through toy giveaway.



43 staff



3 locations



958 families served



10 virtual events



230 attendees

2021 VOLUNTEER SUMMARY



Volunteers: **91**



Hours: **7,518**

Value = \$214,563

Special shout out to sponsors:

- Age of Learning
- Baby2Baby
- Billie Eilish
- The Colleagues
- The C.H.I.P.S
- FilmToys/ Film Craft
- Good Plus Foundation
- Kari Miller /Neiman Marcus
- Les Amies
- Platinum Cargo Logistics
- UCLA Latino Alumni Association
- Vertical Networks Productions
- JLLA
- J.WestAmerica Co.

Early Childhood Education

Children's Institute offers home-based and center-based early learning and development opportunities to children across Los Angeles. Our Head Start and Early Head Start programs ensure a successful transition to kindergarten and beyond.

Last year, 300 teachers and home visitors, along with a large group of parent volunteers, transformed CII preschools into virtual learning centers overnight. This year, our early education staff—under shifting guidelines, uncertainty, and at times their own personal losses and stress—have continued to ensure that CII students received the support and care they needed to succeed in school.

During Safer at Home orders, teachers played a vital role identifying urgent needs and connecting families with resources in their community for rent assistance, job placement, domestic violence services and much more. CII Head Start and Early Head Start centers were converted into community hubs where staff distributed meals and other essentials.

When it came time to re-open our classrooms in 2021, we implemented the latest safety protocols, following local and CDC guidelines.



Behavioral Health & Wellness

As a leader in trauma-informed care, Children’s Institute provides counseling services to children, adolescents, transition-aged youth and parents. Our team of professionals—many of whom are from the same LA neighborhoods we serve—help to identify and reduce symptoms of traumatic stress, improve coping skills and build resilience. Programs range from individual and family treatments to specialized therapeutic groups.

Last year, 89% of children demonstrated improvement on the Pediatric Symptom Checklist, a valid and reliable tool used to assess a range of emotional, behavioral and attentional risks in children.



YOU GOOD?

In May 2021, Children’s Institute, Partners for Children South L.A., St. John’s Well Child and Family Center, Watts Leadership Institute and a network of Watts-based nonprofit organizations, announced You Good?, a bilingual mental health awareness campaign centered in South Los Angeles.

The campaign was created with input from stakeholders and CII’s Community Wellness Advisory Committee, made up of residents and providers who support the well-being of the community through outreach and wellness initiatives.

Designed as a question, You Good? seeks to engage with the audience and start a conversation, while the tagline — “It’s okay to say you’re not okay” — creates space for an authentic answer.

Learn more at yougood.la

Government Affairs & Advocacy

Created as part of CII's 2018–22 Strategic Plan, our Government Relations & Advocacy department influences policies that shape the lives of children and families. Through a comprehensive, two-generation approach, we champion a vision of healthy children, thriving families and empowered communities. In order to fulfill this vision, we confront the disproportionate impact and harm of racism and multiple forms of discrimination across our institutions. Centering on equity, our policy agenda advocates for a just system where historically marginalized communities can access the tools, resources and opportunities to reach their fullest potential.

Our current Policy Agenda includes a focus on:



Two Generation Approach

We envision a coordinated and integrated system that promotes whole child and family well-being, education, economic stability, career development, and social capital.



Early Childhood Education

We envision that every family has access to high-quality early learning opportunities within a mixed-delivery system.



Behavioral Health & Wellness

We envision a comprehensive, family-centered behavioral health system that is culturally responsive for children and families.



Community Schools

We envision that all schools organize a trauma-informed, whole child and family approach to learning and development.



Child Welfare

We envision children and their families strong and thriving in enduring relationships and stable environments.



Nonprofit Sustainability & Partnership

COVID-19 has made clear the critical role of nonprofits during a health and economic crisis. We envision the financial stability of nonprofit organizations to be a safety net for our communities.

Office of Equity

The children and family members we serve have experienced intergenerational trauma perpetuated by long-standing racist systems and policies. CII created the Office of Equity to mitigate the negative impact of an unjust system, to support our employees, and to apply an equity lens to all we do.

We envision a future where all children and families have equitable pathways to wellness and opportunities. Starting with our staff, we create a work environment that is inclusive, diverse and supports continuous learning and growth. This approach extends to the children and families in our programs and the communities where we work.



45 hours of training



783 staff

Including targeted learning opportunities for all-staff, supervisors, and senior leadership.



TRAUMA INFORMED CARE CONFERENCE

In April 2021, CII hosted a virtual convening featuring prestigious national leaders in trauma-informed care. Now in its ninth year, CII's Trauma-Informed Care conference deepens knowledge of trauma-informed practices for professionals in mental health, child welfare, education and related fields.

Best-selling author Professor Ibram X. Kendi and former CEO of Harlem Children's Zone Anne Williams-Isom, our keynote speakers, spoke about advancing equity, especially in light of the pandemic and the racial awakening of the past year.

Recognizing that this year has been particularly challenging for the nearly 500 attendees, Professor Kendi offered encouragement and guidance: "You may not be able to speak to your experiences facing anti-Black racism or even trying to navigate the world as a Black child or parent, but there are things you can do. You can learn the culture, the history and the experiences. The more you understand the folks you're serving, the better support you'll be able to provide."



LGBTQ+ YOUTH

The Individualized Transition Skills Program (ITSP) team at Children's Institute recognized that the transition to virtual interactions created added strain on youth mental health. LGBTQ+ foster youth in particular were impacted by the loss of affirming relationships in schools, outdoor activities, clubs, and community LGBTQ+ youth organizations.

In response to this, the ITSP team created a support group during the pandemic called "The Bright Room" to provide LGBTQ+ youth with a much-needed safe space where they could have open discussions on different issues and share their experiences. The Bright Room allows LGBTQ+ youth to feel heard, supported and acknowledged as they face barriers during the coming out process.

"I want our youth to know that you all have so much potential and are so unique," wrote ITSP Supervisor Stephani Collazo during PRIDE month. "Your paths may seem full of uncertainty, but do not lose hope that life will get better. The biggest blessing is to be true to who you are and never doubt that you deserve everything the world has to offer. Always aspire, inspire and thrive as you move through your life."

3rd Annual Cape & Gown Gala

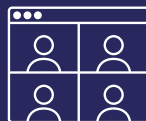
The 3rd annual Cape & Gown Gala was held virtually due to the COVID-19 pandemic, uniting attendees to celebrate CII's important work.

Emceed by Emmy® Award-winning TV host and author Loni Love, the evening featured Pulitzer-Prize winning journalist Wesley Lowery, LAPD Deputy Chief Emada Tingirides, GRAMMY® Award-winning singer-songwriter Billie Eilish and acclaimed filmmaker/actor/producer Rob Reiner. Guests were moved by presentations featuring CII Child & Family Specialist Yarely Rosas and CII program participants LaRae and Royalty.

Viewing from the comfort of their homes, more than 350 supporters enjoyed a gourmet snack box curated by Chef and tv personality. Nyesha J. Arrington. Select sponsors included Ceja Vineyards, a Mexican-American, family-owned winery founded by Amelia, Pedro, Armando and Martha Ceja producing premium estate-grown wines from the Napa and Sonoma Valleys.



\$470,000+
Raised for Children
& Families



350+
Virtual
Attendees



8
Stellar
Guest Speakers

Building on Success

CII is delighted to announce that the \$25.8 million Building on Success capital campaign closed in March 2021. While the COVID-19 pandemic has delayed occupancy of the new space—lovingly designed by world-renowned architect Frank Gehry—doors will officially open in February 2022.

We are deeply grateful to CII's Board of Trustees, private individuals, foundations, and our beloved CII support groups who all contributed to the campaign:

Susan C. and Stephen E. Adamson
The Ahmanson Foundation
Raúl Alvarado
Annenberg Foundation
Ballmer Group
Catherine and Robert Beyer
Blossom Trustman Living Trust
The C.H.I.P.S.
California Community Foundation
The Capital Group Companies Charitable Foundation
Carolina Herrera
Adam and Allison Checchi
Gabriel and Christine Chiu
The Colleagues
Mary Collins
The Carl & Roberta Deutsch Foundation
Chuck and Lauren Diamond
The Eisner Foundation
Hugh Evans
The Fletcher Jones Foundation
Stephanie Fox
The Fran & Ray Stark Foundation
Tom Gores
The Gores Foundation
Ahmad and Haleh Gramian
The Harold McAlister Charitable Foundation
Marcia Wilson Hobbs
Daryn McDonald Horton

Johnny Carson Foundation
Justin Dart Family Foundation
Sally and Paul R. Kanin
W. M. Keck Foundation
Bridget Gless Keller and Paul Keller
K. John Lee
Leonetti O'Connell Family Foundation
Les Amies
Los Angeles Galaxy Foundation
Mari and Patrick McAlister
Meredith Corporations
The Chris and Dick Newman Family
The Otis Booth Foundation
Steven H. Pokress
The Ralph M. Parsons Foundation
David and Barbara Rognlien
The Rose Hills Foundation
Todd and Jacqueline Rosen
S. Mark Taper Foundation
Marna and Rockwell Schnabel
Judith K. Sherven and James Sniechowski
SoCal Office Technologies
Suzanne Marx and Dr. Gary Tearston
Barbara Hale Thornhill
Kathleen M. Vanderziel
Weingart Foundation

Donations above reflect gifts of \$2,500+



Financial Highlights

FISCAL YEAR 2020-2021

Our success is due to the generosity of public and private supporters. We are grateful to the many individual, foundation, corporate and board donors, and to our support groups — The Colleagues, The C.H.I.P.S. and Les Amies — whose contributions have allowed us to provide comprehensive, high-quality services to our community's most underserved children and families.



Managing to the highest nonprofit standard, we use

85%

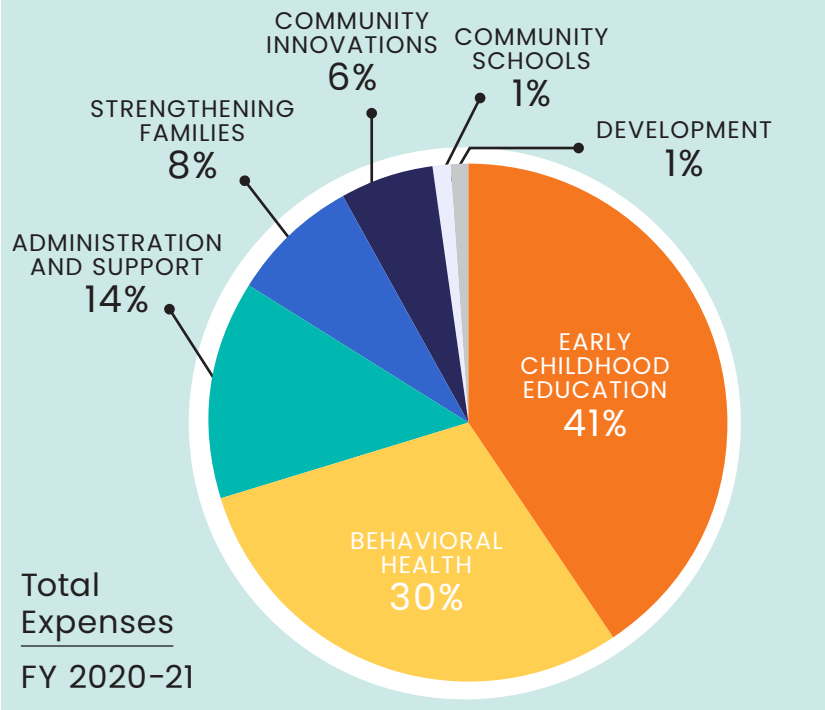
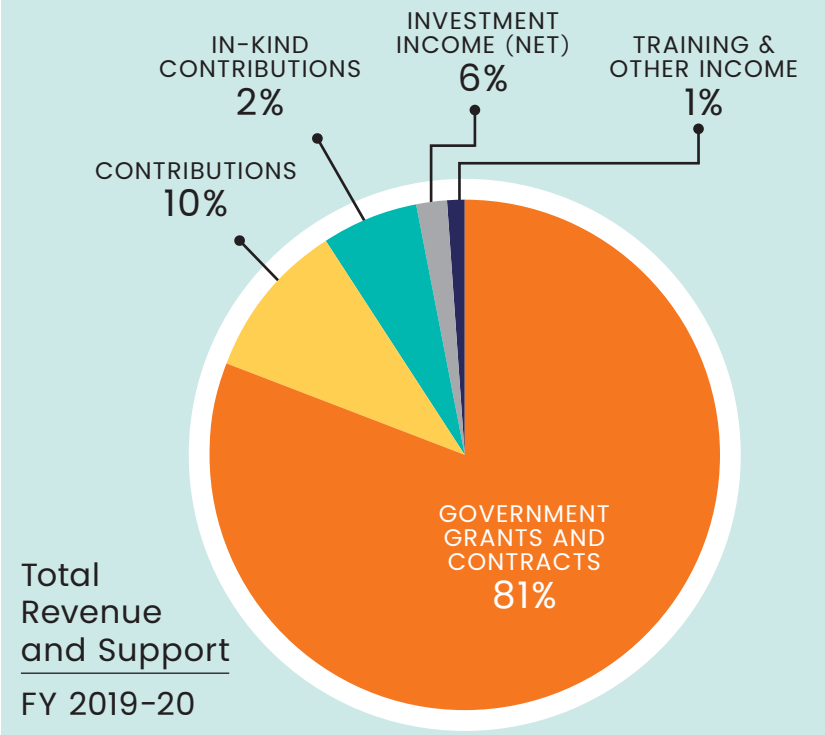
of our expenses for direct program services.

FY 2020-2021 Summary of Financial Data

REVENUE AND SUPPORT	
Government Grants and Contracts	\$76,284,390
Contributions	9,817,275
In-kind Contributions	1,972,818
Training & Other Income	309,647
Investment Income (Net)	5,705,621
TOTAL REVENUE AND SUPPORT	\$ 94,089,751

EXPENSES	
Early Childhood Education	\$ 35,278,442
Behavioral Health	25,491,145
Community Innovations	5,068,271
Strengthening Families	6,851,437
Community Schools	696,831
Administrative and Support	11,841,397
Development	728,617
TOTAL EXPENSES	\$ 85,956,140

Children’s Institute’s consolidated financial statements are audited annually. The condensed consolidated statement of activities was extracted from the consolidated audited financial statements. Consolidated audited financial statements are available upon request.



Donor Honor Roll

A LEGACY OF GENEROSITY | JULY 1, 2020–JUNE 30, 2021

\$1M and above

Anonymous
Ballmer Group *
California Community Foundation –
CARES Act ~
S. Mark Taper Foundation *

\$250,000 – \$999,999

California Community Foundation
Cedars–Sinai
The Colleagues
The Edna McConnell Clark Foundation
The Estate of Lee Vandervelde
The Rose Hills Foundation +~

\$100,000 – 249,999

The Ahmanson Foundation
The Atlas Family Foundation
The Carl & Roberta Deutsch
Foundation
Les Amies +
Robert H. Tuttle Charitable Lead Trust

\$50,000 – \$99,999

Anonymous
The C.H.I.P.S.
Great Public Schools Now
Jean Perkins Foundation
The Jewish Community Foundation ~
The Otis Booth Foundation
Reissa Foundation
Sierra Health Foundation

\$25,000 – \$49,999

The Capital Group Companies
Charitable Foundation
The DevTo Support Foundation
Donna Edmiston Living Trust
Makayla and Johnny Hekker
Sally and Paul R. Kanin
Los Angeles Rams
R.J. and D.A. Munzer Foundation
Chris and Dick Newman and Family
Pandora North America
RAR Family Foundation
Suzanne Rheinstein

\$10,000 – \$24,999

Bank of America
Elizabeth L. Barbatelli
Bergen Foundation
Burnham Benefits Insurance Services
Johnny Carson Foundation
Adam and Allison Checchi
City National Bank
Carolyn Clark Powers
The Dohring Family Foundation
Foreman, JP & BJ Exempt Trust
Stephanie Fox *
The Fran & Ray Stark Foundation *
Steven Gomez
Barbera Hale Thornhill +
The Harold McAlister Charitable
Foundation
The Horn Foundation

In-N-Out Burger Foundation
Tarek Kutrieh and Dr. Jennifer Linehan
Kutrieh
Renata Landres
Beth and Bob Lowe
Suzanne Marx and Dr. Gary Tearston
Nordstrom
Barry and Carole Patmore and Family
Gelila Assefa Puck
The Ralph M. Parsons Foundation
Dr. Bill Resnick and Michael J. Stubbs
Marna Schnabel and Ambassador
Rockwell Schnabel
Glenn and Andrea Sonnenberg
UnitedHealthcare
Weingart Foundation
Wells Fargo Bank

\$5,000 – \$9,999

Arthur J. Gallagher & Co.
Baxter Family Foundation
Katherine and Bill Burford
Canterbury Consulting, Inc.
Communities Foundation of Texas
Justin Dart Family Foundation
Dudley and Anne Crawford DeZonia
Michael and Janet Fourticq
The Goetzman Group
Good + Foundation ~
Grace Helen Spearman Charitable
Foundation
Tracey Kennedy

Sally and David Michaels
Joline Morgan ~
Neiman Marcus Group
New Markets Community Capital
Laurence Tighe
Unisource / Haworth
Kathleen M. Vanderziel
Warner Bros. Television Group
William H. Hannon Foundation

\$1,000 – \$4,999

Susan C. Adamson
Amazonsmile
Bradley Anderson
Anonymous
Rachel and Lee Ault
Avison Young Southern California
Kim Baer
Charmaine and Sean Bailey
The Beveridge Family Foundation
Catherine and Robert Beyer
Justine and Robert Bloomingdale
Bogaard Group International
Boone Fetter LLC
Bottega Management Group
Christina Caruso
Chait & Company
The Chuck Lorre Family Foundation
Debra Colbert
DSH // architecture
Kathleen Duncan
Encino Financial Center, Ltd.

Stella Hall Fordyce and James Fordyce
Frederic D. Rosen & Nadine Schiff Family Foundation
James and Jaimi Freeman
Tracey Gluck
Lauren Gabor and Scott Goldstein
Good Old Lew Foundation
Goodwin Family Memorial Trust
Green, Hasson, Janks
GRP Financial California, LLC
Beth and Sunil Gunderia
Susan Sands Harbert
Harrison-Chevalier, Inc.
Lysa Heslov
Daryn McDonald Horton
Diana Hughes
ICM Partners
Jenny Jones
Deborah and Ivan Kallick
Bridget Gless Keller and Paul Keller
Jennifer Keller
Katy Kreitler
Katie and Rick Lewis
Jonathan and Nancy Littman
Sally and Joshua Livingston
Los Angeles Galaxy Foundation
Marchetti Family Fund
Mari and Patrick McAlister
Davis McHenry
Thomas Morstead
Miriam Muscarolas and Grant Abramson
Joyce Nitz
Northern Trust
Richard Norton
Oasis Church LA ~
Cathy Paul
Joan and Douglas Prestine
Revolution Office
Nina Revoyr

Rita J. & Stanley H. Kaplan Family Foundation
Jaye and John Rogovin
Carey and Tim Romer
Patricia and Michael Rosenfeld Saks, Incorporated
Sidney Kohl Family Foundation
Martine Singer
Dr. Wendelin Slusser
Steaven K & Judith G Jones Foundation
Claudia Stone
Tides Foundation
Tisbest Philanthropy
Alexandra Tuttle
Donna Tuttle and David Elmore
Clancy White
Wine Warehouse
Philip Winik

\$100 - \$999

James Adcock
Marjorie Alden
Allstate Giving Campaign
Michele and Arlen Andelson
Ken Anderson
Anonymous
Anthem Blue Cross
Archer Education, Inc
Canise Arredondo
Leslie Askanas
Catherine Atack and Tim Duffy
Susan and Robert Bagdasarian
Dr. Bruce L. Baker
Lisa Baker Morgan
William Baumgart
Alison Becker
Judith and Thomas Beckmen
Gena Bell and Dave Witherow
Michele Bell
Benevity Community Impact Fund

Pat Benson
Jamie Bernstein
Anastasia Betts
Jacqueline Beyer ~
Caroline Bird
Matthew Bogaard
Arnie Bok
Fredrika Brillembourg
Billy Brockway
Lt. Gena Brooks
Simona Brown
Alex Cameron
Justine Campbell
Paula and Gary Campbell
Katy Caouette
Trisha Cardoso
Mrs. Allan M. Cartter
Ling Chan
Dee Dee Hitchcock-Chappelle and Bill Chappelle
Kathryn Chevalier
Cioffi Family Charitable Fund
John and Linda Coleman
Jace Cook
Natasha Croxall
Christian Cruz
Chava Danielson
Rebecca De Mornay
Diane Dickey
Jason and Deirdra DiNapoli
Jon Dohring
Robert Dohring
Joan and Albert Dorman
Sahaja Douglass
Douglas Dreier
Dennis Durkin
Fernanda Eberstadt
Amber Eyerly
Ron Eyesereye
Nika Fabienke
Joyce Francis

Frontstream
Catherine Gee
Donald Gerber
Stuart Gibbs
Andrea Gill
Charles Gilman
Ginger
Good Today
Rachael Gordon
Marcie Greene
Carolyn A. Hampton
Scott Hampton
Becca and Michael Hartmeier
Kellie Hawkins
Joy Hekker
The Hertz Family Fund
Delphine Ho
Maxine Hockley
Dana Holcomb
Bonita Hornstein
Melanie Horowitz
Laura Hovis Martin
Amanda and Chapin Hunt
Monica Hylande Latta
Ryan Imondi
Arturo Irizarry
Kathryn M. Jackson
Claire Joseph
Steve and Elena Kandell
Courtney Kearns
Katherine Keesal
Loretta Keller
Debra Kerr
Brian Khoddam
Patricia Klowden
David Kuhn
The Laetsch Family Foundation
Electra and Peter Lang
Lawrence & Sandra Post Family Foundation
Howard A. Lee

Leisure Family Trust
 Mr. and Mrs. Maury Leonard
 Marjorie Lewis
 Michael Libow
 Wendy Liu
 Patricia Lombard
 David Lopez
 Meredith Louria
 Patricia Lynch
 Barbara Machen
 Edith Madrid
 Esther Magna
 Phyllis Magrab
 Juan Maldonado
 Elizabeth Malloy
 Jenny Mangelsdorf
 Michael Marchetti
 Chad Maxner
 Danette McBride
 Sabine McBride
 John McCallie
 Joyce McGilvray
 Vanessa and Stuart McLean
 Guadalupe Mejia
 Errina Mercer
 Katherine Meyer
 Kristin Miletich
 Mindling-Schulman Family
 Foundation
 Montage Insurance Solutions
 Edna Monterroza
 Molly Morgan
 Pamela Morton
 Angella Nazarian
 Ricky Newton
 Raymond Nhan
 Israel Niezen
 Kristine Nishiyama
 Matthew O'Donnell
 Jill and Eric Olofson
 Daniel Ornstein
 Tanya Ortiz Franklin

Rebecca Palacios
 Cathryn and Victor Palmieri
 Sarah and Alan Patmore
 Ania M. Patterson
 Perry Family Foundation
 Alison and Daniel Petrocelli
 Marni and Bennett Pozil
 Margaret and Ronald Preissman
 Jon Rashap
 Elizabeth Rawjee
 Maureene and John Reidy
 Lucas Reiner
 Nicky Reinhard
 David Reinsvold
 Theresa Renn
 Kathy Rieken
 Linda Riley
 Riot Games ~
 Thomasine H. Rogas
 Jacqueline and Todd Rosen
 David Rossi
 Linda and George Sakellariou
 Keris Salmon
 Mark Sampson
 Tiana Sanchez
 Joanne Sanders
 Kirsten Sakisian
 Alyson Sattler
 Andrea Scharff
 Linda Schwartz-Wright
 Dena Scott
 Rhea Seehorn and Graham Larson
 Chip Sellers
 The Selman/Ridgeley Family Trust
 Evan Sexton
 Nina Bernstein Simmons
 Danone Simpson
 Rabbi Suzanne Singer
 Kara Snead
 Julia Sorokin
 Joe Spencer
 Brenna Stanton

Leslie Anne Steiner
 Carrie Stonberg *
 Christine Stoner-Metz
 Kurt Stottlemeyer
 Eugene Straub
 Nancy Studhalter
 Ruth and Jay Sugerman
 Soparvan Suphamongkhon
 Katherine Swett
 Lea Tanasale
 KP Thai
 Deputy Chief Emada Tingirides and
 Retired Deputy Chief Phil Tingirides
 Elizabeth and Mark Tinglof
 J and K Tobler
 Diana Toerge
 John Trapani
 Tiffany Tuttle
 Jordan Vanderweyden
 Stephan M. Vener
 Andrew Wallace
 Beatrice and Michael Wallace
 Dwo Wang
 Marianna Wardy
 Rachel Weber
 Alexander Weinstock
 Liane and Richard Weintraub
 Sasha Willimann
 Christine Woertink
 The Wonderful Company Foundation
 Lisa Woodward
 Suzanne Wrobel
 Angela Yim-Sullivan
 Stephanie Yost
 Victoria Yust
 Andrew Zhou
 Freya Zhou

* = Watts Donor
 + = Watts + General Operating Donor
 ~ = COVID-19 Relief Fund Donor

GOVERNMENT FUNDERS

California Department of Education
 City of Los Angeles City Attorney's Office
 City of Los Angeles, Bureau of Engineering
 First 5 LA
 Housing Authority of the City of Los Angeles
 Los Angeles County Department of
 Children and Family Services
 Los Angeles County Department of
 Mental Health
 Los Angeles County Department of
 Public Health
 Los Angeles County Office of Education
 US Department of Health and
 Human Services:
 Administration for Children and Families
 Substance Abuse & Mental Health Services
 Administration
 Department of Justice
 Children's Initiative

**Thank you to our generous
 donors, government funders,
 and those who have provided
 in-kind support.**

BOARD OF TRUSTEES

Chairman of the Board

Paul R. Kanin – Kanin Soffer

Vice Chair / Treasurer

Tarek Kutrieh – Vungle

Secretary

Barbera Hale Thornhill – Impact Design

*Raúl E. Alvarado – A Thousand Joys

*Loren Booth – Booth Ranches

Lt. Gena Brooks – Retired, Los Angeles Police Department

William R. Burford – Bonel Management

Adam Checchi – Checchi Capital Advisers

Charles P. Diamond – Retired, O'Melveny LLP

Channing Dungey – Warner Bros. Television Group

James G. Freeman – Bridge Investment Group

Steve Gomez – LiveControl

Sunil Gunderia – Age of Learning

Nina Holland – CII Early Head Start Policy Council

Bridget Gless Keller – Bridget Gless Designs

Nicole Leonard – Cedars-Sinai

* Trustee Emeritus

Suzanne Marx – Community Leader

Sally J. Michaels – Community Leader

Lisa Baker Morgan – Attorney-at-Law, Writer and Chef

Chris Newman – Community Leader

Barry Patmore – Management Consulting

Gelila Assefa Puck – Couturier

David Rognlien – Cadna Automotive

Lindsey Ross, MD – Cedars-Sinai

Glenn A. Sonnenberg – Latitude Management Real Estate Investors

Deputy Chief Emada E. Tingirides – Los Angeles Police Department

Kathleen M. Vanderziel – The Capital Group Companies

SUPPORT GROUPS

Les Amies

Kathy Hampar, President

The Colleagues

Janet (Jenny) Jones, President

The C.H.I.P.S.

Katie Lewis, Past President

EXECUTIVE STAFF

Martine Singer
President and Chief Executive Officer

Catherine Atack
Senior Vice President and
Chief Development Officer

Todd Sosna, Ph.D.
Chief Program Officer

Gene Straub
Executive Vice President and
Chief Finance and Operating Officer

Maria Willard
Senior Vice President and
Chief Talent Officer



children's institute

2121 W. Temple Street | Los Angeles, CA 90026

To make a donation or become a volunteer,
visit childrensinstitute.org



All children appear with the consent of their parents or guardians and are not under the jurisdiction of the court or child protective services.

© 2021 by Children's Institute | All rights reserved.